



ASPIRING TO  
**GREATER**  
HEIGHTS



## ABOUT THE COMPANY

*In 1992, Bernard C Dwyer founded his scaffolding and temporary access company, then called PHD Scaffolding Ltd, in London. During the next few years PHD worked for some of the top companies in the UK, including British Rail, BBC, BP, ITV, Thames TV, Bovis, Langs, Costain and many more.*

Today, PHD Access is an international award-winning scaffolding and access provider, with a strong focus on delivering innovative solutions that exceed client expectations. In our 30 years' experience, we have worked on bespoke and high-end projects in the UK, Ireland, Denmark, Dubai and the Bahamas.

We have delivered iconic projects across the world, such as the Elizabeth Tower restoration, Marylebone Station, One Hyde Park, AstraZeneca, London Stadium for the 2012 London Olympics, Great Ormond Street Hospital, Boyne Bridge, the grand opening for the Atlantis in Dubai, Victoria Tower, King's Cross Station, Terminal 2 at Dublin Airport, Cutty Sark and Battersea Reach.

### THE FUTURE OF PHD

To continue the steady growth of the PHD Access brand, focusing on sustainability and continuous improvement in training of our main asset (our valued employees), whilst being in an enviable position to improve our delivery from concept to completion with eco-friendly solutions.

**“PHD OFFERS AN UNCOMPROMISING APPROACH TO HEALTH AND SAFETY”**

- Danny Dwyer, Managing Director

### OUR MISSION

Our mission is to provide the construction industry with the highest standard of excellence. To become the number one company delivering all access requirements and solutions, whilst not compromising our health, safety, or sustainability standards.

### OUR VALUES

At PHD, we encourage all our staff to work towards our three core values: professional, high-quality, and delivery-focused, whilst also reinforcing our mantra 'Safety By Choice, Not By Chance'.





# WHAT WE DO & WHAT WE OFFER

PHD provides the industry with bespoke access solutions, producing challenging engineered ideas with innovative techniques. Our one-stop-shop enables our clients to be reassured that their projects will be completed professionally, honestly, dependably and safely. Our experience is extensive in the residential, commercial, heritage, infrastructure & power, rail, international, and healthcare sectors.



## SCAFFOLDING

Scaffolding is essential for a wide range of building projects. The structures we design, and build can be on a small or large scale and are tailored for your tailored requirements. Our access scaffolding services cover access platforms, staircase systems, birdcages, lifting beams, handrails, edge protection and much more.

### Key Advantages of Scaffolding:

- Provides necessary height and reach for workers without awkward angles
- Time and cost saving solution; easy to erect, dismantle and adapt
- Wide range of solutions to suit your needs



## HOISTS

Hoists are temporary construction elevators that are powered vertically by electricity driving a cage on a rack and pinion system to quickly carry goods or passengers to a given floor level. Hoists come in various configurations and sizes which are defined by site space and also the loadings they will be subjected to.

### Key Advantages of Hoists:

- Cost-effective solutions to vertical access
- Varying choice of cage sizes, load capacities and lifting speeds
- Our fleet are all under 5 years old and include the latest computer technology, including remotely diagnosing faults

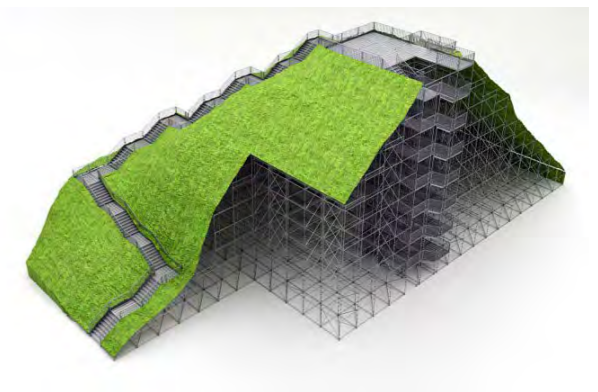


## MAST CLIMBERS

Mast Climber Work Platforms (MCWPs) provide fast, efficient, and affordable temporary access to a wide range of construction and maintenance work. Unlike conventional scaffolding, the entire platform moves with the works, so the operator can spend more time on productive tasks.

### Key Advantages of Mast Climbers:

- Effective solution for transporting workers and materials to ideal working height
- Reduces worker fatigue and enables operatives to work from optimum height
- Reduces project time by up to 35% if used in the right environment



## TEMPORARY WORKS DESIGN

Temporary Works Designing is a vital part of the modular access process, placing stern emphasis on health and safety first and foremost. Our highly experienced design team work with the latest software, including BIM joinery and 3D modelling, and tools to ensure client's designs are always ahead of the curve.

### Key Advantages of Temporary Works Design:

- In-house Design Team follows the process from initial ideas through to completion
- Designs can be presented in both 2D and 3D CAD
- Works towards your own exact requirements, allowing the perfect fit



SCAN ME FOR MORE INFORMATION ON OUR VARIOUS SERVICES



SCAN ME TO READ ABOUT OUR LATEST PROJECTS



# HEALTH, SAFETY & WELLBEING

*Above everything else that we do here at PHD, Health and Safety are top priorities. Our Mantra "Safety By Choice, Not by Chance" is one that is echoed throughout every part of our company from our office staff to our operatives on site.*

## OUR INITIATIVES

At PHD, communication is an integral part of HSEQ. We understand that employee involvement is key to our success and we pride ourselves in getting that ethos across from day one. Below is a section of some of the things we at PHD do to ensure Safety By Choice, Not By Chance:

### INDUCTIONS

1-day Company Inductions including latest SG4, TG20 & SG6 training, and drug & alcohol testing.

### PERFORMANCE

Red, Orange & Green initiative cards for monitoring and rewarding performance.

### ALERT SYSTEM

Text message alert system with weather warnings, training reminders etc.

### FEEDBACK

Online "Your Shout" anonymous feedback forms available via QR code for digital responses.

### NEWSLETTERS

Monthly Newsletter keeping all at PHD up to date with the latest news.

### TOOLBOX TALKS

Toolbox Talks of the Month focusing on key industry subjects. We also use analytics from our inspections to focus in on specific areas.

### SEMINARS

PHD hold annual H&S Seminars. These feature talks motivational speakers, business updates and health monitoring stations.

### MEETINGS

Monthly HSEQ Meetings & Monthly Safety Committee Meetings. Monitoring of Health & Safety KPIs and performance.

## MENTAL HEALTH

We are passionate about raising awareness and understanding around the importance of good mental health across PHD and the industry-as-a-whole. PHD are committed to removing the stigma and ending discrimination around mental health through our pro-active approach.

All our Site Managers and Directors have been trained in Mental Health First Aid and we have implemented new mental health initiatives to provide an informal network for anyone needing to talk or find support in times of difficulty or stress. Our Mental Health Initiative is to create and sustain a platform to address Mental Health as a priority within the workplace. This platform will research, provide services, and focus on mental health.

We are proud sponsors for the Lighthouse - The Construction Charity, the only charity that provides emotional, physical and financial well being support to construction workers and their families.



# TRAINING WITH YOU IN MIND

*Our values motivate us to ensure people and safety remain paramount in all that we do. Our aim is to attract, develop and retain skilled and motivated people who share our values and interests and enjoy what they do. We are always looking for individuals with fresh ideas to join us.*

*We regularly hold various training workshops throughout the year for our staff, including Achieving Behavioural Change, Site Manager Training, First Aid at Work, and Fire Marshalling to name a few.*

## STARTING YOUR JOURNEY WITH PHD

PHD are dedicated to helping young adults start a career in the scaffold industry. Our 18-24 month apprenticeship offers the opportunity to learn terminology, familiarise with equipment and gain on-site knowledge, along with attaining an *NVQ Level 2 in Scaffolding, Accessing Operations and Rigging* from Simian Risk.



## APPROVED IPAF TRAINING CENTRE FOR MCWP & HOISTS

PHD are an IPAF Training Centre for Mast Climber Work Platforms and Hoists. IPAF (International Powered Access Federation) promotes the safe and effective use of powered access on a worldwide scale through safety initiatives and training programmes.

Our courses range from installers, operators, to demonstrators and trainers. These courses are led by an IPAF instructor and on completion, attendees will receive a certification and a PAL card that lasts for five years.

## CHOOSE PHD FOR YOUR SECOND CAREER

In 2019, PHD signed the Armed Forces Covenant and engaged with the MoD's official provider of Armed Forces resettlement, the Career Transition Partnership (CTP). We know that veterans and reservists are highly skilled, committed, and capable employees, with a wide range of transferable skills to the construction sector. This is why we developed our Veterans Scheme.

The three-year scheme offers the on-the-tools experience needed, alongside gaining the right qualifications, before building a promising managerial career within the scaffolding and construction industry.

## OFFERING A NEW START FOR RETURNING CITIZENS

Our newest training scheme has been developed with the NASC to offer new starts in life for those leaving the prison system. The Returning Citizens Programme will be a year long scheme offering jobs as labourers with valuable insight into the construction sector.

At the end of the programme, candidates are given the choice to join our scaffolding apprenticeship scheme, continue as a labourer or work towards a different career path with the help of PHD.



## SPECIAL PROJECTS

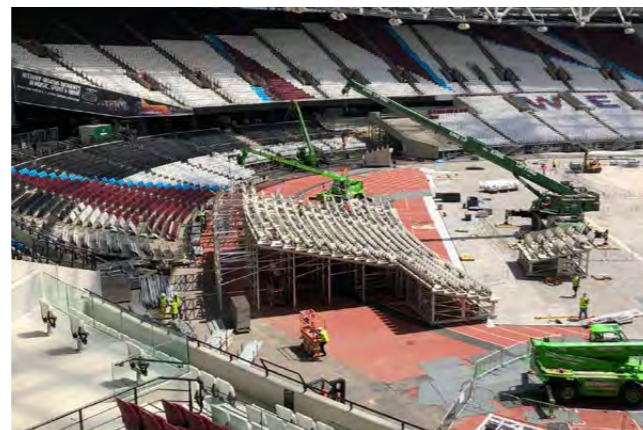
*We are proud to be at the forefront of delivering bespoke installation solutions using innovative techniques, alternative materials, and new applications. We are constantly striving to find pioneering ways of overcoming challenges, safely and expertly, so that when you work with us, you can rest assure that your project will be done to the highest possible standard.*



### HMS VICTORY

After a very rigorous tendering process, PHD Access were chosen to work with the National Museum of the Royal Navy (NMRN) for the conservation of HMS Victory. While the full project is likely to take 12 years, the current phase has put HMS Victory under wraps and fully enclosed the ship. This made the ship weathertight so the conservation work could begin.

Platforms were built surrounding the ship, allowing visitors to see specialist shipwrights at work and view Victory from a brand-new perspective. This scaffolding installation phase took nine-weeks to install a free standing 33m x 33m temporary roof and visitor experience.



### STADIUM SEATING RELOCATION

PHD were approached to undertake the daunting task of re-configuring the Olympic Stadium seating bowl from its summer use of athletics to the winter mode of football. This required alteration to all four stands in the lower bowl to improve viewing experience of the spectator; primarily moving them forward and installing relevant walkways and bridges to allow access and egress.

The seating transition at the London Stadium consisted of the reconfiguration of 20,000 seats, that required the co-ordination of a number of specialist "air-skating" and lifting operations. These systems utilise compressed air under high pressure to lift the stand on cushions and allow it to be carefully guided

into position with mechanical assistance. This only reduced the overall duration of the seating move but also reduced the number of high-risk activities, such as craneage and work at height. The transition of the stands on this scale had not been attempted previously, nor under such a restrictive time frame.

### NEW BOND STREET STATION

An unusual request. The brief was to design, manufacture, deliver and install a bespoke Rack & Pinion traveller so our client's operatives could install the steel frame and cladding works in Europe's second largest escalator shaft.



The normal capacity for a Mast Climber Work Platform (MCWP) is 2.5 tonne, but New Bond Street required 7.5 tonne, and the ability to carry two MEWP's and a Hiab Crane arm. PHD conceptualised and created a bespoke dual platform, safety tested to 7.5 tonne payload, working on a 30-degree incline angle, to run vertically on a 60-meter track.

Our engineers worked to design and manufacture a prototype with our partners, and after 12-weeks were sufficiently advanced to install on site. The client was happy as it reduced the duration of the programme and was overall much cheaper in terms of time and money than conventional methods of Scaffold Chain.

### GRID BUILDS

PHD were appointed to install a smart fulfilment platform comprising of an aluminium and steel grid, track, and enclosure system to high tolerances for a prominent manufacturing client.

We undertook pre-commencement surveys, utilizing a 3D scanner to overlay the design and actuals, highlighting deviations and potential clashes. PHD implemented an automated total station for quality assurance checks, and this was monitored inhouse, being the first fulfilment centre that has been delivered using this system.

PHD provided all management, labour, and plant for the grid build and at the projects peak, PHD had 70 operatives onsite. PHD manufactured two 'grid



carts' as a safety measure to reduce working at height, which due to their success are now an asset, rolled out on all our client's UK builds.

When complete, the Fulfilment Centre will be one of the most advanced of its type in the world with high-tech automation. It will be used to further improve our client's distribution operations in the local area for their customer base.



SCAN OUR QR CODE TO VIEW OUR OTHER SPECIAL PROJECTS



## HOW WE WORK

*We take a customer focused approach and collaborate to provide clients with a bespoke package that suits their needs. From traditional building methods to more technically advanced approaches that are sensitive to the environment, our in-house design team and estimators listen to your requirements and will visit your site to give you a choice of tailored solutions.*

“IT DOES NOT TAKE MUCH STRENGTH TO DO THINGS, BUT IT REQUIRES A GREAT DEAL OF STRENGTH TO DECIDE WHAT TO DO.”

– ELBERT HUBBARD

## OUR EXPERTISE

PHD's innovative approach provides our clients with a single point of contact to benefit from the best integration of products and services to meet their project requirements.

As well as guaranteeing a superior service, our proven track record highlights work of a superior standard.

We take great pride and place huge emphasis on our Health & Safety record which has now become synonymous with the PHD brand name; we have an exemplary health and safety record that is second to none!



## OUR SIX-STEP PROCESS



PLANNING

After tender has been won and contracts signed, our procurement, design and commercial teams do a 'pre-start' meeting to discuss our methodology.



INSTALLATION

Once planning has been finalised, we coordinate delivery of materials and start the assembly of required works. This is overseen by operative management and supervisors.



HAND-OVER

We hand-over certifications and inspection results to relevant people via electronic tablets. We're proud to be working towards paperless offices and sites.



ADAPTIONS

At this stage, we will be managing a live access project on a day-to-day basis. We will be doing daily inspections, training apprentices, and making minor adaptations if necessary.



DISMANTLE

Once the main works have been completed, we start the dismantle of our access works. This is often progressive to allow for remedial works to be carried out.



COMPLETION

After completion, a vital step in our work is to review how the project went. Our Senior Managers sit down and weigh up pros, cons and how PHD can do better for the future.



“  
**THE STRENGTH OF THE TEAM IS EACH INDIVIDUAL MEMBER. THE STRENGTH OF EACH MEMBER IS THE TEAM.**

- Phil Jackson



**COMPANY & TEAM STATISTICS**



Aiming to be Carbon Neutral by 2030.



man-hours without RIDDOR



Employees, plus Operatives



CISRS trained Operatives

**INTRODUCING OUR TEAM**

*Our people are at the core of everything that we do and as such we strive to develop a culture which harnesses talent and allows it to develop. Developing and retaining talent is fundamental to the success of our business and ensures that our focus on delivering safety is not diluted.*



**Danny Dwyer**  
 Managing Director

Masters in Engineering. A pioneer in innovation and client relations. Uncompromising approach to Health & Safety.



**Lloyd Hannon**  
 Pre-Construction Director

Highly experienced within the scaffolding industry. Enjoys solving challenging and diverse access issues.



**Naz Mayadeen**  
 Asset Management Director

Senior Director with 25 years' service in various roles within the PHD Group. Experience in both the UK and overseas.



**Olly Mansell**  
 HSEQ Director

Extensive experience in the construction industry. Educates, promotes and innovates Health and Safety for PHD and clients.



**Will Wansbrough**  
 Head of Operations

Accomplished operations manager with over 17 years' experience. Great track record of delivering large scale schemes in the commercial, residential.



**Lauren Bennett**  
 Managing Surveyor

Comprehensive experience within construction. Focused on providing financial and commercial solutions.



**Richard Smith**  
 Financial Controller

Excellence in Resource Management. 13 years leading the Finance department of successful SMEs in the construction industry.



**Michael Eager**  
 Senior Design Engineer

Highly experienced Design Engineer with over 10 years' service within the scaffolding and access industry.



# WHY YOU SHOULD CHOOSE US

PHD boast an abundance of experience to assess a requirement, providing cost effective solutions for the client due to the history of our multi-disciplined innovation works. Our Safety & Health record and attention to ensure continual improvement is our key focus within the business to guarantee the success is felt through both our clients and business.

## 4 REASONS WHY WE'RE DIFFERENT

### 1 The health, safety and wellbeing of our team is our number one priority

It's vital that safety comes first and foremost throughout our business. All operatives are inducted at Head Office prior to arriving on site and we operate a 100% CISRS card policy across our projects. Once on site, all employees wear PHD branded PPE, allowing clients to identify individuals at first glance.

In the past few years, we have focused on improving our understanding on mental health awareness and have implemented training, exercises, videos, and charity days centered around raising understanding and changing the perspective of mental health.

### 3 Always aiming to be at the forefront of innovation

PHD will find an all-round solution to any project needs, whilst ensuring the client remains confident in our approach through proactive monitoring.

We have the luxury of being able to offer you various forms of temporary access solutions. Our concept & technical teams convert ideas into workable solutions, no matter how complex the issue, whilst our out-the-box thinking, and vast experience allows us to assess your requirements to provide you with a full-fledged solution.

### 2 We are focused on sustainability and the future

At PHD, we believe that responsible behaviour and our choices affect communities, our people and the environment. We aim to minimise the impact our projects might have on the natural world through careful planning and optimising our material assets.

We want a bright and hopefully future for the next generations, which is why we actively consider environmental impact in our day-to-day activities.

Additionally, we have visited primary and secondary schools in local areas to promote the construction industry as a career path.

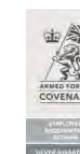
### 4 Collaboration with construction is a vital key to our success

Right from the start, we aim to develop a strong relationship with you so that we understand your needs and the specific challenges of your project.

Communication is an essential part of our culture at PHD, and we believe in being honest and transparent in our services.

We've learnt that through collaborative working with our clients has meant safer sites, improved efficiency, more effective problem-solving, and customer satisfaction.

## CERTIFICATIONS



## AWARDS



## OFFICIAL SPONSORS OF



Sligo Rovers Football Club



London Irish Wild Geese Rugby Club



Lighthouse - The Construction Charity



Hillerød Wolfetones GAA



**“BEING GREEN IS MORE THAN JUST BUYING ‘ECO’. IT IS AN UNSHAKEABLE COMMITMENT TO A SUSTAINABLE LIFESTYLE.”**

- Jennifer Nini

## SUSTAINABILITY

*PHD are continuously striving to minimising our environmental impact. Where possible, we look for the more sustainable sources for our scaffolding equipment and are currently looking into how we can become a carbon neutral company.*

We believe that responsible behaviour and our choices affects our communities, our people and our environment. At PHD we aim to minimise whatever impact our projects might have on the natural world through careful planning and optimising our material assets.

We achieve this in a number of ways, from simply recycling in our offices and procuring sustainable materials to considering the environmental impact at the initial design stage of our service and planning deliveries efficiently so as to reduce our carbon emissions. Driving our processes is an ISO14001-certified environmental management system supported by our in-house team.

### SUITABLE SCAFFOLDING

We choose Layher as our go-to scaffolding choice. The way Layher is designed means more equipment can be loaded on each lorry, reducing the number of deliveries to sites, in turn, reducing the CO2 emissions produced.

Layher is also lighter than regular scaffolding, with less components, meaning it reduces the risk of health to manual handling and installing the scaffolding.

### RECYCLE, REUSE, REDUCE

Where possible, we recycle all our scaffolding equipment and only purchase timber from sustainable sources. All our fleet vehicles are fuel efficient. In the office we procure our energy from renewable sources.

At our Head Office, we have installed three electronic plugs for electric cars, and are in the process of buying hybrid and electric company cars and vehicles for our staff. We also encourage all our operatives to use public transport or cycle to and from work through internal reward schemes.

In 2022, PHD Access launched our ‘No Idling’ campaign. The campaign encouraged all company drivers to switch off their engines when parked, emphasising the importance of reducing unnecessary pollution and saving fuel.

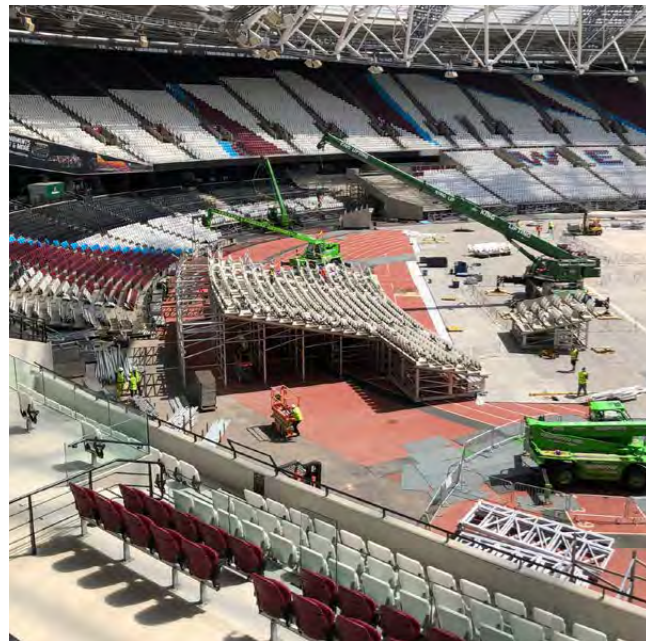
PHD Access has successfully transitioned to a paper-free approach on construction sites by incorporating Field View into our operations. Leveraging the features of this construction management software, we have streamlined communication, enhanced collaboration, and effectively managed project information without the need for traditional paper documentation.

We aim to be a carbon neutral company by 2030. We recognise that by offsetting our carbon emissions we will be playing a huge part on the sustainability of the planet and reducing our carbon footprint.



## INNOVATION

We are always aiming to discover new ways in exceeding our client's requirements for a project, even on the most challenging of requests. PHD have been at the forefront of finding bespoke access solutions using innovative techniques, alternative materials, or new applications.



### AIR SKATES

PHD were approached to undertake the daunting task of re-configuring the Olympic Stadium seating bowl from its summer use of athletics to the winter mode of football. This required alteration to all four stands in the lower bowl to improve viewing experience of the spectator; primarily moving them forward and installing relevant walkways and bridges to allow access and egress.

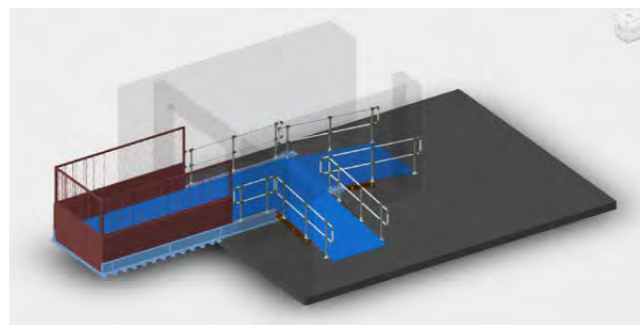
The transition of the stands on this scale had not been attempted previously, nor under such a restrictive time frame. To ensure the successful transition, the team developed an innovative air skate system to allow free movement of the seating structure.

### CANTILEVER LOADING BAY

PHD Access has celebrated the successful installation of our bespoke cantilevered loading bays at a Data Centre in Frankfurt.

While traditional cantilevered load bays secure to the floor so that it is level with the existing concrete slab, our bespoke design raised the floor level to the top of the steel beams so that movement of plant was not limited to between the load bay beams.

Within one month – from drawing approval to the installation of two Cantilever Loading Bays in Germany – we demonstrated our commitment to innovation and client satisfaction.



## OUR EUROPEAN LOCATIONS

PHD Access is an international award-winning scaffolding and access provider, with a strong focus on delivering innovative solutions that exceed client expectations. We have five main hubs - UK, Ireland, Denmark, Spain and Portugal. We've also worked in the UAE and the Bahamas.



1. UK
2. Ireland
3. Denmark
4. Spain
5. Portugal
6. France
7. Germany
8. Belgium
9. The Neatherlands
10. Sweden



CONTACT US FOR A QUOTE BY SCANNING THIS QR CODE





## **CONTACT US**

---

+44 (0) 1895 822 292  
info@phdaccess.com  
www.phdaccess.com

PHD Access  
54 Oxford Road, Denham  
Uxbridge, UB9 4DN

